

**ESTD
1977**

PRODUCT



ESTD 1977

**Transmission
Line Products**

Company Profile



Vision

To make quality products and become the trusted name for railways across the world



Our Head Office
Transmission Line Products
102, Central Plaza,
2/6 Sarat Bose Road
Kolkata - 700019
West Bengal



Our Factory
Transmission Line Products
Sankrail Industrial Park,
NH-6, PO Dhulagori,
PS Sankrail,
Howrah - 711302
West Bengal

Empowering Railways for a Greener Tomorrow

Transmission Line Products (TLP) started operations in 1977. The organization was formed to cater to the burgeoning electrification needs of all the state electricity boards across the country. Taking into consideration the quality of products manufactured by TLP, in 1985, Indian Railways approached TLP to manufacture OHE fittings required for railway electrification. Since then, TLP has been developing and manufacturing items for both transmission lines and railway electrification. Over time, TLP had become one of the leading design and manufacturing company for transmission line products for the power sector and railway electrification items for Indian Railways and had also become one of the most trusted companies in the railway sector for its ability to adapt to new changes.

In 2013, TLP started its foray in the metro sector through Jaipur Metro. From then onwards TLP has been supplying to different metros across the country.

In 2017, TLP was approached by Dedicated Freight Corridor (DFC) to design special items for them. TLP at present is one of the largest supplier of those products to the DFC.

From 2019 onwards, TLP started to focus on just railway electrification. Since then, it has not only continued to manufacture for railways, but it has also become one of the primary suppliers for metros across India and DFC as well. Due to its technical brilliance, TLP has earned accolades for customizing many items for customer needs.

Riding on our proven capabilities, TLP is now moving towards manufacturing other railway items apart from only OHE.

Company Values



QUALITY

From its inception, TLP has stood out from the competitors due to its reputation for quality. Not only do we follow clients' requirements religiously, we also question and add to it based on our experience. Our focus on automation, our strict quality control procedures and trained employees form the basis of our well earned reputation.



ADAPTABILITY

Adaptability is part of our DNA. We know that change is inevitable. Our decisions are made based on our vast experience, trained staff, equipment that meet the need and direction of the market. This is why we are known in the country for our ability to make new products for our clients.



CLIENT SATISFACTION

Client satisfaction is why we have some of the oldest customers in the industry. Our quick turnaround, focus on quality and adaptability allow us to service our clients to their utmost satisfaction.

TLP Customers

This is an illustrative list



TLP User Segments





Contents

Newly Approved Items

Strain Clamp Link	7
Normal Bent Steady Arm Hook.....	7
Counter Weight Eye Rod.....	7
Double Clevis Assembly	7
Tee Connector	8
Straight Connector.....	8
Guy Rod 10.9 m)	8
Guy Rod (12.3 m).....	8

Our Customized AC Products

88.9 OD Connectors.....	10
50 mm IPS Connectors	11
L Shaped Links	12
Compression Sleeves.....	13
Cu & Al Bronze	14

Our Standard AC Aluminium Products

Caps	16
Clamps	17
Clips.....	20
36 mm IPS Connectors	21
50 mm IPS Connectors	25
Joints	31
Sleeves.....	31
Splices	31

Our Standard AC Copper Products

Brackets.....	33
Clamps	33

Clips.....	38
Connectors	39
Sleeves.....	41
Splice.....	41
Thimbles	41

DFC Special Items

Guy Rods.....	43
Counter Weight Eye Rod.....	48

Our Standard AC Iron & Steel Products

Adjusters.....	50
Anchor Items	52
Brackets.....	54
Clamps	54
Clevis.....	55
Clips.....	56
Connectors	58
Counter Weight Items.....	59
Counter Weight Items.....	60
Distance Rods	60
Electrodes.....	60
Eye	61
Guy Rods.....	62
Hook	64
Links	66
Mast Fittings	66
Plates.....	66
Sleeves.....	67
Swivels	70
Termination Fittings	71



Contents

DC-AC Customized and Standard Products

Parallel Clamps	73
Ending Clamps	74
Adjusters.....	74
Parallel Clamps	75
Splicing Clamps.....	78
Suspension Clamps.....	78
Dropper Clips.....	79
Swivel Clips	80



Our Newly Approved Items

Our Products



Newly Approved Items

1263



Strain Clamp Link

Weight Its weight is about 0.7 kg
Usage This is used in termination fittings

2523



Normal Bent Steady Arm Hook

Weight Its weight is about 0.4 kg
Usage It is used in steady arm

5094-1



Counter Weight Eye Rod (0.65 m)

Weight Its weight is about 2.037 kg
Usage Style 1 to be used in circular counter weight assembly and Style 2 to be used in trapezoidal counter weight assembly

3011-2



Double Clevis Assembly

Weight Its weight is about 0.975 kg
Usage Double Clevis Assembly is used in termination fittings of feeder, return conductor and return feeder

Newly Approved Items

TI/DRG/OHE/FTGFE/RDSO/00017/22/0



Tee Connector Suitable for 20 mm GS wire to 20 mm GS wire

Weight Its weight is about 1.5 kg
Usage This connector is used in earthing arrangement

TI/DRG/OHE/FTGFE/RDSO/00021/22/0



Straight Connector Suitable for 20 mm GS wire to 20 mm GS wire

Weight Its weight is about 1.5 kg
Usage This connector is used in earthing arrangement

5005-1



Guy Rod (10.9 m long)

Weight Its weight is about 44 kg
Usage These are rods of diameter 25 mm and are used in mast fittings. Their height and weight differ based on where it is to be used.

5005-2



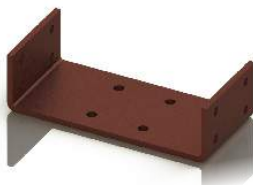
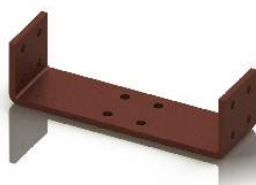
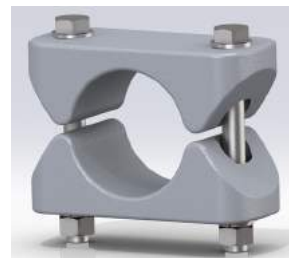
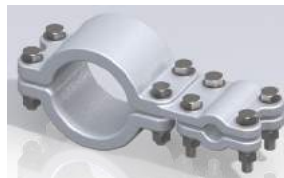
Guy Rod (12.3 m long)

Weight Its weight is about 47 kg
Usage These are rods of diameter 25 mm and are used in mast fittings. Their height and weight differ based on where it is to be used.



Our Customized AC Products

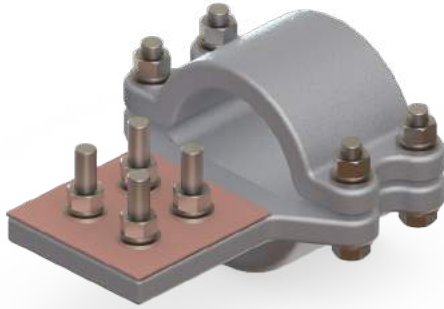
Our Products



Customized Aluminium Items

88.9 OD Connectors

T889-1



Rigid Bi-metallic Terminal Connector
suitable for 88.90 mm Dia. Al. Tubular
busbar to Terminal pad of 25KV
Isolator/CT

Weight Its weight is about 2.7kg
Usage This item is used to connect
Aluminium busbar to Terminal Pad

T889-2



Expansion Type Terminal Connector to
suit 88.90 mm dia Al. Tubular busbar to
CT / Isolator / Terminal Pad

Weight Its weight is about 2.14 kg
Usage This item is used to connect
Tubular busbar to Current
Transformer or Isolator or Terminal
pad

T889-3



25kv system rigid Bus Splice connector
to suit 88.90 mm O/D Al. tube on both
ways

Weight Its weight is about 3.84 kg
Usage This item is used to connect Al.
Tube from both sides

T889-4



25KV system TEE connector to suit
88.90 mm O/D Al. Tubular busbar

Weight Its weight is about 3.0 kg
Usage It is used to connect Tubular bus-
bar with another Tubular busbar

Customized Aluminium Items

88.9 OD Connectors

T889-5



25kv system Tee connector to suit 88.90 mm o/d Al. Tubular busbar to AAC Spider conductor

Weight Its weight is about 2.60 kg

Usage It is used to connect Tubular busbar to AAC Spider conductor

T889-6

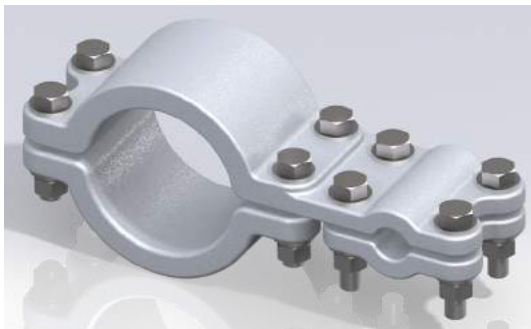


Sliding clamp for 88.90 mm o/d Al. Tubular busbar

Weight Its weight is about 1.80 kg

Usage It is used on Tubular busbar

T889-7

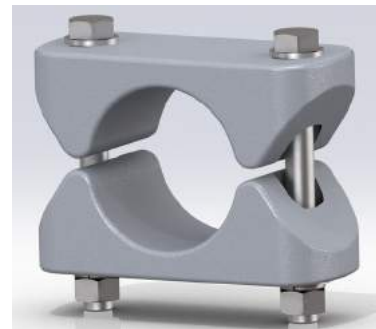


Rigid Through connector to suit 88.90 mm Dia. Al. Tubular busbar & AAC Spider conductor for 25KV PT Type-II

Weight Its weight is about 1.66 kg

Usage This item is used to connect Tubular busbar & AAC Spider conductor for 25kv Potential Transformer Type-II

T889-8



Rigid Connector on Section Insulator to suit 88.9 mm O/D Al. Tubular Busbar

Weight Its weight is about 2.90 kg

Usage This item is used on Tubular busbar

Customized Aluminium Items

88.9 OD Connectors

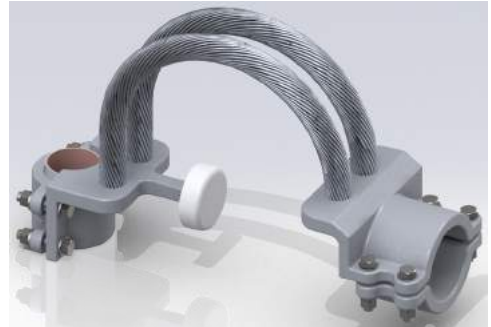
T889-9



Expansion Type Bus Connectors on Section Insulator to suit 88.9mm o/d Al. Tubular Busbar

Weight Its weight is about 6.11 kg
Usage This item is used on Tubular busbar

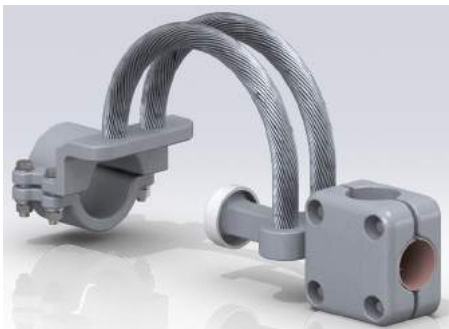
T889-10



Expansion Type Bus Connectors on Section Insulator to suit 88.9mm o/d Al. Tubular Busbar

Weight Its weight is about 6.67 kg
Usage This item is used on Tubular busbar

T889-11



Expansion Type Universal Bi-Metallic Type Terminal Connector 60 mm dia. Cu. Stud to 88.9 mm dia. Busbar

Weight Its weight is about 9.7 kg
Usage This item is used to connect 60 mm dia. Cu. Stud to 88.9 dia. Busbar

50 mm IPS Connectors

11040 (M)



TEE Connector to Suit 21 mm. dia. ACSR Panther

Weight Its weight is about 2.21 kg
Usage It is used to connect 21 mm. dia. ACSR Panther at right angle to the 21 mm. dia. ACSR Panther

Customized Aluminium Items

50 mm IPS Connectors

11110 (M)



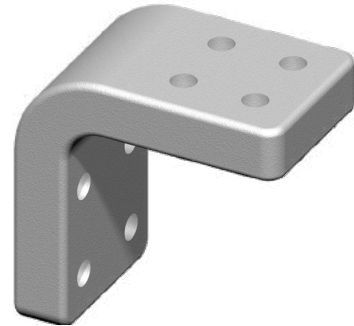
Rigid Through Connector to Suit 50 dia. Al. Tubular Busbar & 'Panther' AAC conductor for 25 kv PT Type-II

Weight Its weight is about 2.14 kg

Usage It is used to connect 50 dia. Al. Tubular Busbar & 'Panther' AAC conductor for 25 kv PT Type-II

L Shaped Links

TLL-30



L Shaped Link for Connector to Terminal Pad

Weight Its weight is about

Usage It is used to connect Connector to Terminal Pad

Compression Sleeves

S-330



Compression Sleeve suitable for AAAC 288 sq. mm. (22.05 mm dia.) conductor

Weight Its weight is about 1.2 kg

Usage This item is used to compress AAAC 288 sq. mm. conductor

S-331



Compression Sleeve suitable for ACSR 93 sq. mm. (12.50 mm dia.) conductor

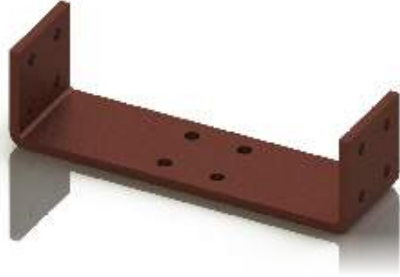
Weight Its weight is about 1.2 kg

Usage This item is used to compress ACSR 93 sq. mm. conductor

Customized Copper Items

Cu & Al Bronze

100 mm width Copper Plate



100 mm Width Copper Plate

Weight Its weight is about 4.6 kg

Usage This item is used in Pune Metro

160 mm Width Copper Plate



160 mm Width Copper Plate

Weight Its weight is about 7.3 kg

Usage This item is used in Mumbai Metro



Our Standard AC Aluminium Products

Our Products



Standard Aluminium Items

Caps

2064-1



Tube Cap 30 mm

Weight Its weight is about 0.04 kg
Usage This item is used in cantilever fittings to seal the end of large bracket tube

2104-1



Tube Cap 40mm

Weight Its weight is about 0.07 kg
Usage This item is use in cantilever fittings to seal end of bracket tube

2423-1



Tube Cap 25mm

Weight Its weight is about 0.04 kg
Usage This item is used in cantilever fittings to seal end of bracket tube

Standard Aluminium Items

Clamps



Standard Anti-wind Clamp

	Weight	Usage
2550-1	Its weight is about 0.21 kg	This anti-wind clamp is to be used with BFB steady arm (identification number 2540)
2550-2	Its weight is about 0.25 kg	This anti-wind clamp is to be used with BFB steady arm (identification number 2390)
2550-3	Its weight is about 0.25 kg	This anti-wind clamp is to be used with BFB section steady arm of tramway type OHE (regulated)

Standard Aluminium Items

Clamps

7040



Earth Wire Mast Clamp

Weight Its weight is about 0.67 kg
Usage To support 6/1/4.09 mm. ACSR earth wire (RACCOON) or AAC 93.3 sq. mm. conductor or 7/3.66 mm. G.I. Earthwire conductor

TLP Drg No.TC-3-19 Alternative to R.I. No. 7050



Earthwire Strain Clamp

Weight Its weight is about 1.479 kg
Usage Used as a termination fitting in 6/1/4.09 mm. ACSR earth wire (RACCOON) or AAC 93.3 sq. mm. conductor or 7/3.66 mm. G.I. Earthwire conductor

TC-4-34



Strain Clamp For 'Zebra' ACSR

Weight Its weight is about 2.36kg
Usage This is used as a termination clamp for ACSR 'Zebra'

Standard Aluminium Items

Clamps

1540



Bi-metallic Parallel Clamp (10/20)

Weight Its weight is about 0.47 kg

Usage This item is used to clamp SPIDER aluminium conductor to 65 sq. mm. cadmium copper catenary (diameter of 10.5 mm) or small jumper with 1 mm thick Bi-metallic strip

1550



Parallel Clamp (20/20)

Weight Its weight is about 0.86 kg

Usage This item is used to clamp Aluminium large jumper of diameter 21 mm or SPIDER Aluminium conductor to another Aluminium large jumper of diameter 21 mm or another SPIDER Aluminium conductor

1560



Bi-metallic Parallel Clamp (15/20)

Weight Its weight is about 0.95 kg

Usage This item is used to clamp SPIDER aluminium conductor to large jumper wire (105) or feeder wire (150) with 1 mm thick bi-metallic strip

Standard Aluminium Items

Clamps

SK-123



Bimetallic Parallel Groove Clamp(14/9)

Weight Its weight is about 0.626 kg
Usage It is used to clamp 19/2.79 Al. conductor and 9 mm dia. small jumper with 1 mm. thick bi-metallic strip

SK-231



Parallel Groove Clamp(18/14)

Weight Its weight is about 0.62 kg
Usage It is used to clamp Al. alloy conductor of 14 mm. dia. and 15.2 mm dia. large jumper with 1 mm. thick bi-metallic strip

1580



Large Suspension Clamp 20 mm

Weight Its weight is about 1.46 kg
Usage It is used to clamp 19/3.99 AAC SPIDER conductor

Standard Aluminium Items

36 mm IPS Connectors

6480



36 mm Aluminium Bus Terminal to 25 kv Isolator (Rigid Type) Pad with Bi-metallic Strip

Weight Its weight is about 1.75 kg
Usage Aluminium Bus Terminal is used to connect 25 kv Isolator (Rigid Type) Pad

6490



36 mm Aluminium Bus Splice

Weight Its weight is about 2.23 kg
Usage It is used for splicing straight joints in 36 mm o/d Aluminium Bus Bar

6500



36 mm Aluminium Bus TEE Connector

Weight Its weight is about 2.206 kg
Usage It is used for connecting 36 mm o/d Aluminium bus bar at right angle

6510



36 mm Aluminium TEE Terminal

Weight Its weight is about 1.23 kg
Usage It is used to connect terminal pad to 36 mm o/d tubular aluminium busbar

Standard Aluminium Items

36 mm IPS Connectors

6520



Its weight is about 1.93 kg

Weight Its weight is about 1.75 kg
Usage Cadmium catenary (65) tapped from 36 mm o/d Aluminium Bus Bar for drop out fuse switch in switching station

6530



36/20 Terminal Connector

Weight Its weight is about 1.82 kg
Usage It is used for connecting the 20 mm SPIDER conductor to the 36 mm aluminium bus bar at traction sub-station.

6550



36 mm Aluminium Flexible Bus Splice with Bi-metallic Strip

Weight Its weight is about 5.26 kg
Usage It is used for making expansion joints in long 36 mm aluminium bus bar

6560



36 mm Aluminium Bus Splice Cum Tee Connector

Weight Its weight is about 3.54 kg
Usage It is used for splicing and connecting 36 mm o/d aluminium bus bar at right angles.

Standard Aluminium Items

36 mm IPS Connectors

6570



Flexible Connector for 25 kv Circuit Breaker

Weight Its weight is about 5.13 kg
Usage It is used for making expansion joints from 36 mm aluminium bus bar to 30 mm copper stud

6580



36/20 mm Tap Connector

Weight Its weight is about 1.95 kg
Usage It is used for connecting 20 mm SPIDER connector to the 36 mm Aluminium Bus Bar

6590



20 mm Aluminium Bus Bar Tee Connector

Weight Its weight is about 1.73 kg
Usage It is used for connecting 20 mm aluminium busbar or SPIDER conductor at right angle in sub-station

6800



Connector for 30 mm Cu. Terminal Stud and 20 mm. SPIDER Conductor

Weight Its weight is about 2.68 kg
Usage It is used to connect 30 mm. Cu. terminal stud to 20 mm AAC SPIDER conductor

Standard Aluminium Items

36 mm IPS Connectors

6830



Terminal Connector for Aluminium Conductors (bolted type)

Weight Its weight is about 1.32 kg
Usage It is used to connect 20 mm SPIDER AAC to terminal pad of 132 kv isolator / 132 kv CT & 25 kv PT type I & II

6830-1



Terminal Connector for Aluminium Conductors (bolted type)

Weight Its weight is about 0.978 kg
Usage It is used to connect 20 mm SPIDER AAC to terminal pad of 132 kv isolator / 132 kv CT & 25 kv PT type I & II

Standard Aluminium Items

50 mm IPS Connectors

11010



Bi-metallic Terminal Connector to Suit 'Zebra' ACSR Conductor and 30 Dia. Copper Stud

Weight Its weight is about 2.36 kg
Usage It is used to connect 30 mm dia. Cu. stud to 'Zebra' ACSR conductor

11020



Bimetallic Terminal Connector Suitable for 50 Dia. Al. Tubular Busbar to 60 Dia. Cu. Stud of 25 kv CT

Weight Its weight is about 6.5 kg
Usage It is used to connect 50 dia. Al. Tubular Busbar to 60 dia. Cu. Stud of 25 kv Current Transformer

11030



220 kv System Bi-metallic Terminal Connector to suit 'Zebra' (28.58 mm. dia.) ACSR conductor to Al./Cu. Pad of CB / Isolator / CT

Weight Its weight is about 1.88 kg
Usage It is used to connect 'Zebra' (28.58 mm. dia.) ACSR conductor to Al./Cu. Pad of of CB / Isolator / CT

11040



220 kv System Tee Connector to Suit 'Zebra' (28.58 mm dia.) ACSR Conductor on Both Ways

Weight Its weight is about 2.15 kg
Usage It is used to connect 'Zebra' (28.58 mm dia.) ACSR conductor to another 'Zebra' (28.58 mm dia.) ACSR conductor at right angles

Standard Aluminium Items

50 mm IPS Connectors

11050



220 KV. System Rigid Connector on SI to Suit 'Zebra' (28.58 Ø) ACSR Conductor

Weight Its weight is about 1.03 kg

Usage It is used to connect 'Zebra' (28.58 Ø) ACSR Conductor

11060



Expansion Type Connector to Suit 50 dia. Al. Tubular Busbar to Terminal Pad of 25 kv CT/Isolator/CB & Interruptor

Weight Its weight is about 4.62 kg

Usage It is used to connect expansion type connector to suit 50 dia. Al. Tubular Busbar to Terminal Pad of 25 kv CT/Isolator/CB & Interruptor

11070



Rigid Type Bimetallic Terminal Connector Suitable For 50 Dia Al. Tubular Busbar To 30 Dia Cu. Stud Of 25 Kv Current Transformer

Weight Its weight is about 1.77 kg

Usage It is used to connect Rigid Type Bimetallic Terminal Connector Suitable For 50 Dia Al. Tubular Busbar To 30 Dia Cu. Stud Of 25 Kv Current Transformer

11080



Rigid Type Bi-metallic Terminal Connector Suitable For 50 dia Al. Tubular Busbar To 30 dia Cu. Stud Of 25 kv Current Transformer

Weight Its weight is about 2.30 kg

Usage It is used to connect Rigid Type Bi-metallic Terminal Connector Suitable For 50 dia Al. Tubular Busbar To 30 dia Cu. Stud Of 25 kv Current Transformer

Standard Aluminium Items

50 mm IPS Connectors

11090



Rigid Bimetallic Terminal Connector Suitable For 50 dia Al. Tubular Busbar to Terminal Pad Of 25 kv Isolator/CT

Weight Its weight is about 1.77 kg

Usage It is used to connect Rigid Bimetallic Terminal Connector Suitable For 50 dia Al. Tubular Busbar to Terminal Pad Of 25 kv Isolator/CT

11100



Expansion Type Bi-Metallic Terminal Connector to Suit 50 dia. Al. Tubular Busbar To 30 dia. Cu. Stud Of 25 kv CT / Booster Transformer

Weight Its weight is about 0.768 kg

Usage It is used to connect 50 dia. Al. Tubular Busbar To 30 dia. Cu. Stud of 25 kv CT / Booster Transformer

11110



Rigid Through Connector to Suit 50 dia. Al. Tubular Busbar & 'Spider' AAC conductor for 25 kv PT Type-II

Weight Its weight is about 1.91 kg

Usage It is used to connect 50 dia. Al. Tubular Busbar & 'Spider' AAC conductor for 25 kv PT Type-II

11120



Rigid Terminal Connector Suitable For 20 mm dia. Al. Conductor to Terminal Pad Of 110 kv Isolator & 25 kv PT Type I & Type II

Weight Its weight is about 1.43 kg

Usage It is used to connect 20 mm dia. Al. Conductor to Terminal Pad Of 110 kv Isolator & 25 kv PT Type I & Type II

Standard Aluminium Items

50 mm IPS Connectors

11130



Interconnector Suitable For 50 mm dia Al. Busbar & 'Spider' AAC Conductor (For 25kv P.T. Type-I)

Weight Its weight is about 0.884 kg
Usage It is used to connect 50 mm dia Al. Busbar & 'Spider' AAC Conductor (For 25kv P.T. Type-I)

11140



25 kv System Tee Connector to Suit 50 O/D Al. Tube & 'Spider' AAC Conductor

Weight Its weight is about 1.94 kg
Usage It is used to connect 50 O/D Al. Tube & 'Spider' AAC Conductor

11150



25 kv System Tee Connector to Suit 50 O/D Al. Tubular Busbar to 50 O/D Al. Tubular Busbar

Weight Its weight is about 2.31 kg
Usage It is used to connect 50 o/d Al. Tubular Busbar to 50 o/d Al. Tubular Busbar

11180



25 KV. System Rigid Bus Splice Connector to Suit 50 O/D. Al Tube on Both Ways

Weight Its weight is about 2.16 kg
Usage It is used to connect 50 o/d Al tube on both sides

Standard Aluminium Items

50 mm IPS Connectors

11190



25 kv System Sliding Clamp for 50 mm Aluminium Busbar

Weight Its weight is about 1.16 kg
Usage It is used to connect 50 mm Aluminium Busbar

11200



25 kv System Rigid Connector on SI to 50 mm O/D. Aluminium Busbar

Weight Its weight is about 1.10 kg
Usage It is used to connect 50 mm o/d Aluminium busbar

11210



25 kv System Expansion Bus Coupler on SI to Suit 50 O/D Al. Tube

Weight Its weight is about 6.97 kg
Usage It is used to connect Expansion Bus Coupler on SI to 50 o/d Al. Tube

11220



Expansion Type Terminal Connector for 25 kv 60 mm Dia. Terminal for Traction Power Transformer

Usage This item is used in Traction Power Transformers

Standard Aluminium Items

50 mm IPS Connectors

11230



Expansion Type Terminal Connector for 25 kv 30 mm Dia. Terminal for Traction Power Transformer

Usage This item is used with Traction Power Transformers

11240



25 kv System Tee Connector to Suit 36 O/D Al. Tubular Busbar To 50 O/D Al. Tubular Busbar

Weight Its weight is about 2.17 kg

Usage It is used to connect 36 mm o/d Al. Tubular Busbar To 50 mm o/d Al. Tubular Busbar

Standard Aluminium Items

Joints

1610-1



Compression Joint

Weight Its weight is about 0.510 kg
Usage It is used for splicing 19/3.99 mm AAC SPIDER

Sleeves

1640



Repair Sleeve (Compression Type)

Weight Its weight is about 0.26 kg
Usage It is used for repairing the damaged portion of the SPIDER conductor using a hydraulic compressor

Splices

AAJ-608



Compression Joint (Splice) for 93.3 sq. mm. ACSR RACCOON

Weight Its weight is about 1.390 kg
Usage It is used as a splice for 93.3 sq. mm. ACSR RACCOON



Our Standard AC Copper Products

Our Products



Standard Copper Items

Brackets

2380



Hook Bracket (Large)

Weight Its weight is about 0.8 kg
Usage Hook Brackets are used at bridge face cantilevers

2130

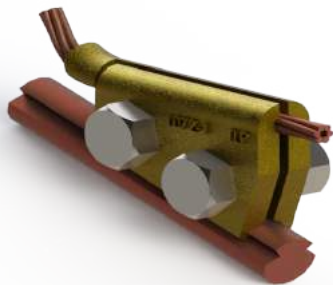


Large Catenary Suspension Bracket

Weight Its weight is about 1.1 kg
Usage These brackets are used on bracket tubes with outer diameter of 49 mm

Clamps

1070-1



Bridle Wire Clamp (6 mm)

Weight Its weight is about 0.2 kg

2140



Catenary Direct Clamp (Large)

Weight Its weight is about 0.8 kg
Usage This clamp is used in two places.

- It is used to fasten catenary directly on a bracket tube with an outer diameter of 49 mm.
- It is also used in regulated tramway OHE. It is used to fasten bridle wire on a bracket tube with an outer diameter of 49 mm.

Standard Copper Items

Clamps

1120



Catenary Ending Clamp (65)

Weight Its weight is about 0.4 kg
Usage This ending clamp is used with stranded cadmium copper catenary wires with a size of 19/2.10 mm.

1130



Feeder Ending Clamps (150)

Weight Its weight is about 0.9 kg
Usage This ending clamp is used with a standard copper conductor of size 37/2.25 mm

1140



Large Span Wire Ending Clamp (130)

Weight Its weight is about 0.9 kg
Usage This ending clamps is used with large cadmium copper span wire (130 mm²) with a size of 37/2.10 mm

1360



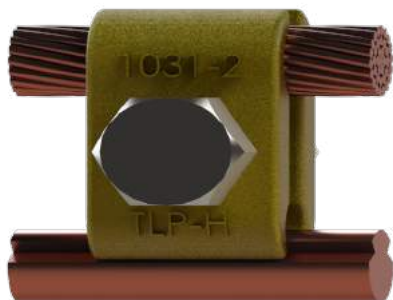
Steel Wire Ending Clamp (90)

Weight Weight – Its weight is about 0.9 kg
Usage This ending clamp is used on galvanized steel wire of size 19/2.6 mm

Standard Copper Items

Clamps

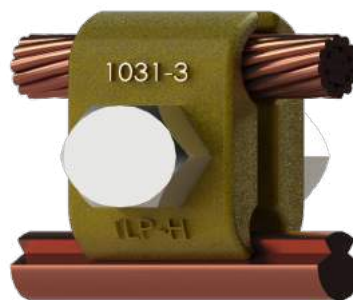
1030-2



Contact Wire Parallel Clamp (Large)

Weight Its weight is about 0.2 kg

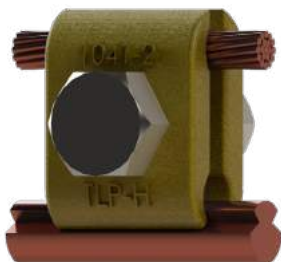
1030-3



Parallel Clamp (157 – 65/107/150)

Weight Its weight is about 0.2 kg

1040-2



Contact Wire Parallel Clamp (Small)

Weight Its weight is about 0.2 kg

1050-2



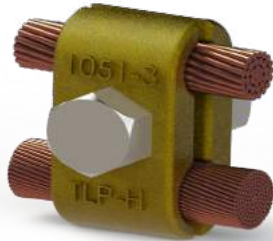
Parallel Clamp (150/105 – 150)

Weight Its weight is about 0.2 kg

Standard Copper Items

Clamps

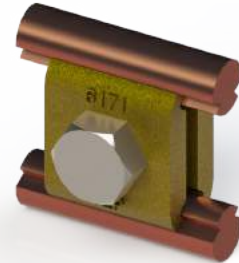
1050-3



Parallel Clamp (150/160)

Weight Its weight is about 0.3 kg

6170



Parallel Clamp (Double Contact Wire)

Weight Its weight is about 0.1 kg

SK-534

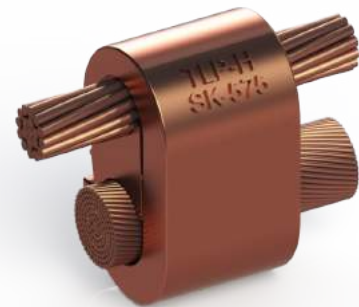


Parallel Clamp (Large) Compression Type

Weight Its weight is about 0.152 kg

Usage This item shall be used for connection of large jumper (105mm² DIA 15.24mm) with cadmium copper catenary. 65mm² (10.5mm)

SK-575



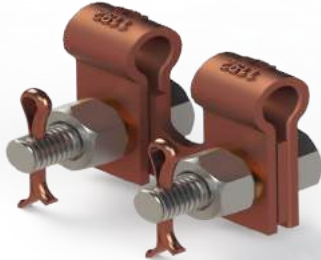
Parallel Clamp (Small) Compression Type

Weight Its weight is about 0.23 kg

Standard Copper Items

Clamps

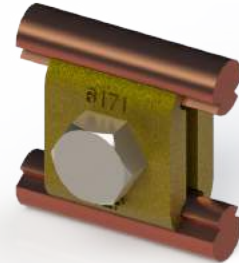
1310



Pull Off Clamp

Weight Its weight is about 1.1 kg
Usage This clamp is used in pull off assembly

1160



Suspension Clamp

Weight Its weight is about 0.5 kg
Usage This suspension clamp is used for suspension of Catenary Wire of size 65 mm² with a diameter of 10.5 mm

1170



Double Suspension Clamp

Weight Its weight is about 0.7 kg
Usage This clamp is used for suspension of either of the following
 2 Catenary wires of 65 mm² of diameter 10.50 mm or
 Galvanized steel wire of size 19/2.5 mm and Catenary wire of 65 mm²

Clevis

1270-1



Suspension Clevis (18 mm)

Weight Its weight is about 0.2 kg
Usage This clevis is used for suspension arrangement with a 9 tonne insulator

Standard Copper Items

Clips

1180



Contact Wire Dropper Clip (107)

Weight Its weight is about 0.07 kg
Usage This clip is used to clamp dropper with catenary wire

1192



Catenary Dropper Clip

Weight Its weight is about 0.04 kg
Usage This clip is used with 19/2.1 mm cadmium copper catenary wire and dropper wire with a diameter of 5 mm.

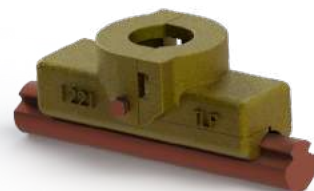
1194



Bridle Wire Dropper Clip

Weight Its weight is about 0.03 kg
Usage This clip is to be used with 7/2.1 mm cadmium copper conductor and dropper wire of 5 mm diameter.

1220



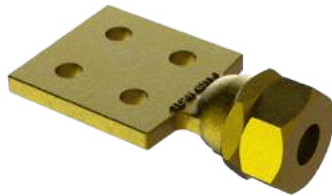
Contact Wire Swivel Clip

Weight Its weight is about 0.2 kg

Standard Copper Items

Connectors

6310-1



18 mm Bus Terminal (Multiple Bolt)

Weight Its weight is about 1.0 kg
Usage This terminal is used to connect bus bar of 18 mm diameter

6320



18 mm Bus Splice

Weight Its weight is about 1 kg
Usage This splice is used with bus bar of diameter 18 mm

6330



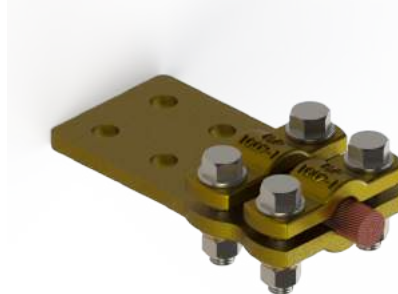
18 mm Bus Tee Joint

Weight Its weight is about 1.8 kg
Usage This tee joint is used with a bus whose diameter is 18 mm

Standard Copper Items

Connectors

1009



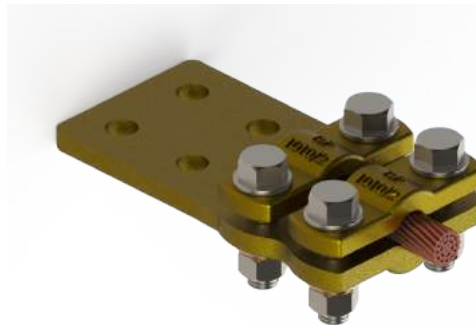
Terminal Connector (19 mm) Multiple Hole (Bolted Type)

Weight Its weight is about 1.3 kg

Usage The connector shall be used for connection of 19/7/1.25 mm (160 mm²) annealed stranded copper large jumper to the following

- 36 mm aluminium bus terminal of Feeding Posts (FP), Sub-sectioning and Paralleling Posts (SSP), Sectioning Posts (SP) and BT location locations
- It is also used for the connection of isolator to OHE.

1010



Terminal Connector (15 mm) Multiple Hole (Bolted Type)

Weight Its weight is about 1.3 kg

Usage The connector shall be used for connection of 19/7/1.016 mm (105 mm²) annealed stranded copper large jumper to the following

- 36 mm aluminium bus terminal of Feeding Posts (FP), Sub-sectioning and Paralleling Posts (SSP), Sectioning Posts (SP) and
- BT location locations

It is also used for the connection of isolator to OHE.

Standard Copper Items

Sleeves

2125



Bridle Wire Sleeve

Weight Its weight is about 0.009 kg
Usage The sleeves are used with catenary direct clamp (2140) when used with the bridle wire of diameter 6.5 mm for regulated tramway OHE as well as at the suspension clamp (1160/1170)

Splice

1090



Catenary Splice (65)

Weight Its weight is about 0.4 kg
Usage This splice is used with 19/2.10 stranded cadmium copper catenary wire whose diameter is 10.5 mm

1080-1



Contact Wire Splice for 107 mm²

Weight Its weight is about 0.9 kg
Usage This is used to splice contact wire of size 107 mm²

Thimbles

1350



Thimble (10 mm)

Weight Its weight is about 0.03 kg
Usage This thimble is used for pull-off using stranded conductors of diameter up to 10 mm



DFC Special Items



Our Products

DFC Special Items

Guy Rods



Guy Rod DIA

	Weight	Usage
5005 (S)	Its weight is about 49.58 kg	It is to be used in Guy Rod assembly
5006 (S)	Its weight is about 22.28 kg	It is to be used in Guy Rod assembly

1161 (S)



Single Suspension Clamp Body

Weight	Its weight is about 0.7 kg
Usage	It is used to clamp catenary wires of dia. 65 sq. mm.

DFC Special Items

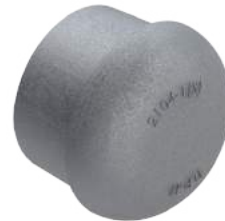
1171 (S)



Double Suspension Clamp Body

Weight Its weight is about 0.85 kg
Usage It is used to clamp catenary wires of dia. 65 sq. mm.

2104-1 (S)



Tube cap (70 mm)

Weight Its weight is about 0.18 kg
Usage It is an end fitting or 70 mm tube or busbar

2131 (S) & 2132 (S)



Large Catenary Suspension Bracket Top & Bottom Special

Weight Its weight is about 2.9 kg
Usage This item is used to hold 70 mm. bracket tubes

2161-2 (S1) & 2162-2 (S1)



Large Register Arm Hook (Top & Bottom) Special

Weight Its weight is about 2.2 kg
Usage It is used to clamp brackets tubes of dia. 70 mm.

DFC Special Items

2161-2 (S1) & 2162-2 (S2)



**Strut Fitting on Large Bracket Tube
(Top & Bottom)**

Weight Its weight is about 2.3 kg
Usage This item is used to clamp bracket tubes of dia. 70 mm for strut fitting

2161-2 (S2) & 2162-2 (S3)



Strut Fitting on Stay Tube of o/d 33.7 mm. (Top & Bottom)

Weight Its weight is about 1.0 kg
Usage This item is used to clamp bracket tubes of 33.7 mm

2277 (S)



Its weight is about 0.29 kg

Weight Its weight is about 2.9 kg
Usage This item is used to clip 70 mm Bracket Tube

2392 (S)



BFB Steady Arm Swivel Special

Weight Its weight is about 0.52 kg
Usage This item is assembled along with BFB to complete the cantilever

DFC Special Items

2402-1 (S)



Modified Tubular Stay Arm Adjuster for DFC

Weight Its weight is about 2.4 kg
Usage This item is used as an adjuster to modify the length of the cantilever as desired

2403-2 (S)



Stay Tube Sleeve 55/33.7 mm

Weight Its weight is about 2.2 kg
Usage This item is used along with stay sleeve

2422-2 (S1)



Register Arm Eye Piece Special

Weight Its weight is about 0.40 kg
Usage This item is assembled along with tube to complete the cantilever

2422-2 (S2)



Register Arm Eye Piece Special

Weight Its weight is about 0.36 kg
Usage This item is assembled along with tube to complete the cantilever

DFC Special Items

2422-2 (S3)



Strut Tube End Fitting

Weight Its weight is about 0.60 kg
Usage This item is used in 33.7 mm Strut tube end fittings

2502 (S)



Anti Wind Stay Wire

Weight Its weight is about 0.09 kg
Usage It is used along with 2392 (S)

2504(S)



Eye Clip for Antiwind Stay With 4mm Packing Piece

Weight Its weight is about 0.75 kg
Usage It is used to clamp stay tubes

3071(S)



Mast Hinge Joint

Weight Its weight is about 1.5 kg
Usage This item is used on masts as a joint

DFC Special Items

Counter Weight Eye Rod

5095 (S)



Counter Weight Eye Rod (1.3m)

Weight Its weight is about 3.5 kg

Usage It is used to hold counter weights



Our Standard AC Iron & Steel Products

Our Products



Standard Iron & Steel Items

Adjusters

5020



9 Tonne Adjuster (Both side eye type)

Weight Its weight is about 2.7 kg
Usage It is used in termination of conductors

5020-1



9 Tonne Adjuster (eye and clevis type)

Weight Its weight is about 2.9 kg
Usage It is used in termination of conductors

5020-2



9 Tonne Adjuster (double clevis type)

Weight Its weight is about 3.2 kg
Usage It is used in termination of conductors

Iron & Steel Items

Adjusters



Tubular Stay Adjuster

	Weight	Usage
2402	Its weight is about 1.6 kg	This has 12 holes
2402-1	Its weight is about 2.0 kg	This has 16 holes

2432



Raised Register Arm Adjuster

Weight	Its weights is about 1.7 kg
Usage	It is used in Raised Register Arm Assembly

Iron & Steel Items

Anchor Items



Standard Anti-wind Clamp

	Weight	Usage
5001	Its weight is about 9.2 kg	It is used for anchor blocks of sizes A1, A2, A3 and A4
5001-1	Its weight is about 11.7 kg	It is used for anchor block of size A5
5001-3	Its weight is about 2.0 kg	This is used as dwarf mast anchor

5030



Anchor Double Strap

Weight	Its weight is about 1.2 kg
Usage	This is used at termination and suspension arrangement

3241-1



Anchor Fitting

Weight	Its weight is about 9.0 kg
Usage	This item is used in anchor fittings on 'K' series, TTC masts and 'P' type portal

Standard Iron & Steel Items

Anchor Items

3242-2



Guy Rod Fitting

Weight Its weight is about 10.5 kg
Usage This item is used in anchor fittings on 'K' series, TTC masts and 'P' type portal

3243-3



Backing Angles

Weight Its weight is about 7.5 kg
Usage This item is used in anchor fittings on 'K' series, TTC masts and 'P' type portal

5008



Anchor Loop

Weight Its weight is about 13.8 kg
Usage This is used for anchoring of guy rods

5007-1



Anchor 'V' Bolt

Weight Its weight is about 2.6 kg
Usage This bolt is used for anchoring of guy rods

Standard Iron & Steel Items

Brackets

2361-1



25 mm Drop Bracket

Weight Its weight is about 1.1 kg
Usage It is used with BFB steady arm assembly 2390

Clamps

6094



Post Insulator Jumper Clamp

Weight Its weight is about 0.4 kg
Usage It is used when aluminium jumper is directly supported on post insulator

6094-1



Post Insulator Jumper Clamp (30 mm)

Weight Its weight is about 0.7 kg
Usage It is used when Zebra ACSR Conductor is directly supported on Post Insulator

6095



Post Insulator Bus Bar Clamp

Weight Its weight is about 0.3 kg
Usage It is used where aluminium bus bar is directly supported on Post Insulator

Standard Iron & Steel Items

Clamps

6095-1



Post Insulator Bus Bar Clamp (50 mm)

Weight Its weight is about 0.3 kg
Usage It is used where aluminium bus bar with an outer diameter of 50 mm is directly supported on Post Insulator

2490-2



25 mm Steady Arm Clamp

Weight Its weight is about 0.7 kg
Usage It is used on 25 mm nominal bore Register Arm Tube

Clevis

5322-1



Clevis & Eye

Weight Its weight is about 0.6 kg
Usage This item will be used with 3:1 ratio three pulley type regulating equipment

3071-1



Mast Bracket Clevis (Forged)

Weight Its weight is about 0.950 kg

Standard Iron & Steel Items

Clevis

3072



Mast Bracket Clevis Pin

Weight Its weight is about 0.155 kg

5040-1



18 mm Single Clevis

Weight Its weight is about 0.8 kg

3011-2



Double Clevis Assembly

Weight Its weight is about 0.975 kg

Usage Double Clevis Assembly is used in termination fittings of feeder, return conductor and return feeder

Clips

2277



Dropper Clip (49) for Large Bracket Tube

Weight Its weight is about 0.1 kg

Usage It is used on tubes with 49 mm outer diameter

Standard Iron & Steel Items

Clips

2461-1



Dropper Clip (34 mm) for Register Arm Tube

Weight Its weight is about 0.1 kg
Usage It is used on tubes with outer diameter of 33.7 mm

2471-1



Dropper Clip (25 mm) for Raised Register Arm

Weight Its weight is about 0.1 kg
Usage It is used on raised register arm adjuster with outer diameter of 25 mm

5063-1 & 5067



Counter Weight Guide

Weight Its weight is about 11 kg
Usage This arrangement is used as a guide for circular counter weights in regulated OHE termination

2274-1



Dropper Clip (38) for Standard Bracket Tube

Weight Its weight is about 0.1 kg
Usage It is used on tubes with outer diameter of 38 mm.

Standard Iron & Steel Items

Connectors

TI/DRG/OHE/FTGFE/RDSO/00017/22/0



Tee Connector Suitable for 20 mm GS wire to 20 mm GS wire

Weight Its weight is about 1.5 kg

Usage This connector is used in earthing arrangement

TI/DRG/OHE/FTGFE/RDSO/0021/22/0



Straight Connector Suitable for 20 mm GS wire to 20 mm GS wire

Weight Its weight is about 1.5 kg

Usage This connector is used in earthing arrangement

Iron & Steel Items

Counter Weight Items



Counter Weight Eye Rod

	Weight	Usage
5094	Its weight is about 2.7 kg	Style 1 to be used in circular counter weight assembly and Style 2 to be used in trapezoidal counter weight assembly
5094-1	Its weight is about 2.037 kg	Style 1 to be used in circular counter weight assembly and Style 2 to be used in trapezoidal counter weight assembly
5095	Its weight is about 3.504 kg	Style 1 to be used in circular counter weight assembly and Style 2 to be used in trapezoidal counter weight assembly
5099	Its weight is about 4.10 kg	

Standard Iron & Steel Items

Counter Weight Items

5098



5kg. Counter Weight Plate

Weight Its weight is about 5.000 kg

Distance Rods

5183



Double Eye Distance Rod (20 mm)

Weight Its weight is about 2.8 kg

Electrodes

7021



Earth Electrode 3.1 m

Weight Its weight is about 10 kg

Usage To be used in a earth station

PSI-222



Earth Electrode (4.0 m)

Weight Its weight is about 12 kg

Usage To be used in typical arrangement of an earth electrode at traction sub-station

Standard Iron & Steel Items

Eye

6068-1



Ball Eye

Weight Its weight is about 0.550 kg

2422-2



Register Arm Eye Piece (25mm) (Forged)

Weight Its weight is about 0.730 kg

Usage This item is used in the 25mm register arm.

2522-2



Normal Bent Steady Arm Eye Piece

Usage This item is used in insulators

2541



BFB Steady Arm Eye Piece

Weight Its weight is about 0.211 kg

Standard Iron & Steel Items

Guy Rod Assembly

5220-1



Guy Rod Double Strap Assembly (100)

Weight Its weight is about 2.639 kg
Usage To be used for guy rod assembly fittings.

5220-2



Guy Rod Double Strap (150/250)

Weight Its weight is about 4.266 kg
Usage To be used for guy rod assembly fittings.

5002



Guy Rod Stirrup

Weight Its weight is about 2.258 kg
Usage To be used for mast fittings.

Iron & Steel Items

Guy Rods



Guy Rod DIA

	Weight	Usage
5004	Its weight is about 35.382 kg	To be used for mast fittings.
5005	Its weight is about 36.982 kg	To be used for mast fittings.
5005-1	Its weight is about 44 kg	To be used for mast fittings.
5005-2	Its weight is about 47 kg	To be used for mast fittings.
5006-1	Its weight is about 22.182 kg	to be used for mast fittings.

Standard Iron & Steel Items

Hook

2160-1



Large Register Arm Hook Top & Bottom Assembly (Forged)

Weight Its weight is about 1.3128 kg
Usage It is to be used on mast fittings in cantilever & steady arm fittings.

2391-1



Steady Arm Hook (B.F.B) (Forged)

Weight Its weight is about 0.479 kg
Usage It is to be used on mast fittings in cantilever & register arm fittings.

2523



Normal Bent Steady Arm Hook

3232



Mast Guy Rod (Welded)

Weight Its weight is about 4.099 kg

Standard Iron & Steel Items

Hook

2523



Normal Bent Steady Arm Hook

Weight Its weight is about 0.4 kg

Usage It is used in steady arm

Standard Iron & Steel Items

Links

1263



Strain Clamp Link

Weight Its weight is about 0.7 kg
Usage This is used in termination fittings

Mast Fittings

3231



Mast Anchor Fitting (Welded)

Weight Its weight is about 3.380 kg

Mast Fitting

3021-1



Mast Fitting for Hook Insulator (Forged)

Weight Its weight is about 1.137 kg
Usage It is to be used hook insulator.

Plates

5190-1



Compensating Plate Assembly

Weight Its weight is about 2.984 kg
Usage It is to be used for conductors having equal tension and regulated

Standard Iron & Steel Items

Plates

5191



Compensating Plate

Weight Its weight is about 2.236 kg
Usage It is to be used for conductors having equal tension and regulated

5191-1



Compensating Plate

Weight Its weight is about 1.158 kg
Usage It is to be used for conductors having equal tension and regulated

5191-2



Compensating Plate

Weight Its weight is about 2.236 kg
Usage It is to be used for conductors having equal tension and regulated

5194



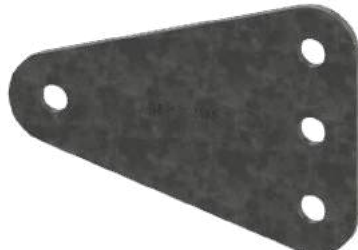
Compensating Plate

Weight Its weight is about 1.158 kg
Usage It is to be used for conductors having equal tension and regulated

Standard Iron & Steel Items

Plates

5195



Compensating 8mm

Weight Its weight is about 2.236 kg
Usage It is to be used for fixed termination end of regulated

5190-2



Equalising Plate Assembly

Weight Its weight is about 5.139 kg
Usage

- It is to be used on fixed termination end of regulated OHE having equal tension of conductor.
- Termination end of unregulated OHE.

5192



Equalising Plate

Weight Its weight is about 3.868 kg
Usage

- It is to be used on fixed termination end of regulated OHE having equal tension of conductor.
- Termination end of unregulated OHE.

5193



Short Equalising Plate

Weight Its weight is about 1.463 kg

Standard Iron & Steel Items

Sleeves

2403-2



Tubular Stay Sleeve (Forged)

Weight Its weight is about 0.364 kg
Usage The fitting shall be used with 25 mm nominal bore tube

6181-1



Section Insulator Double Straps Assembly

Weight Its weight is about 0.133 kg
Usage to be used in section insulator assembly

Swivels

2392



BFB Steady Arm Swivel

Weight Its weight is about 0.375 kg

2542



BFB Steady Arm Swivel

Weight Its weight is about 0.375 kg

Standard Iron & Steel Items

Swivels

2352



Bent Steady Arm Swivel

Weight Its weight is about 0.240 kg

Termination Fittings

0225 Style 1 & 3



Earthwire termination – Style 1 & 3

Weight Its weight is about 3.5 kg

Usage This item is used for typical general arrangement of earth screen wire termination at traction sub-station

0225 Style 2 & 4



Earthwire termination – Style 2 & 4

Weight Its weight is about 2.5 kg

Usage This item is used for typical general arrangement of earth screen wire termination at traction sub-station

0225 Style 5



Earthwire termination – Style 5

Weight Its weight is about 3.8 kg

Usage This item is used for typical general arrangement of earth screen wire termination at traction sub-station

Standard Iron & Steel Items

Termination Fittings

0225 Style 6



Earthwire Termination – Style 6

Weight Its weight is about 7.8 kg

Usage This item is used for typical general arrangement of earth screen wire termination at traction sub-station

ST 501R Style 1



132 Kv String Bus Termination Arrangement for Zebra ACSR

Weight Its weight is about 10.75 kg

Usage This item is used for terminating for zebra conductor

ST 501R Style 2



Earthwire Termination

Weight Its weight is about 8.3 kg

Usage This item is used for terminating for zebra conductor



Our DC-AC Customized and Standard Products

Our Products



Customized Copper Items

Parallel Clamps

PG 375



Parallel Clamp for 160 mm² Jumper Wire to 129 mm² Catenary Wire or 105 mm² Jumper Wire or 150 mm² wire

Standard Copper Items

Ending Clamps

CW/TD/DC-AC/P/001A aka FM/DC-AC/1



Ending Clamp for 242 mm² Catenary

Weight Its weight is about 1.0 kg
Usage This ending clamp is used with 37/2.92 mm (242 mm²) catenary wire

CW/TD/DC-AC/P/002 aka FM/DC-AC/12



Ending Clamp for 193 mm² Contact

Weight Its weight is about 1.0 kg
Usage This ending clamp is used for contact wire of size 193 mm²

		
Ending Clamp	Weight	Usage
FM/DC-AC/2	Its weight is about 0.9 kg	This ending clamp is used with catenary wire of size 19/2.95 mm (129 mm ²)
FM/DC-AC/20	Its weight is about 1.9 kg	This ending clamp is used with 37/3.35 mm (323 mm ²) catenary wire

Standard Copper Items

Parallel Clamps

CR/OHE/DC-AC/102



Parallel Clamp for 160 mm² Jumper Wire to 242 mm² Catenary Wire

Weight Its weight is about 0.7 kg

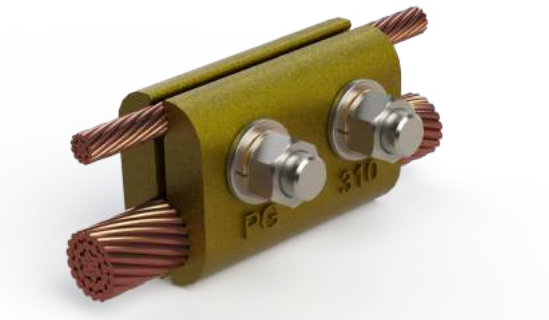
CW/TD/DC-AC/P/010 aka FM/DC-AC/7



Parallel Clamp for 242 to 129/105/150

Weight Its weight is about 0.7 kg

CW/TD/DC-AC/P/011 aka FM/DC-AC/14



Parallel Clamp for 50/65 to 242 Catenary

Weight Its weight is about 0.6 kg

CW/TD/DC-AC/P/012



Parallel Clamp for 242 mm² Catenary Wire to 242 mm² Catenary Wire

Weight Its weight is about 1.4 kg

Standard Copper Items

Parallel Clamps

FM/DC-AC/8



Parallel Clamp for 323 to 129/105/150

Weight Its weight is about 1.4 kg

FM/DC-AC/13



Parallel Clamp for 50/65 to 193/129

Weight Its weight is about 0.3 kg

FM/DC-AC/15



Parallel Clamp for 193 Contact to 129/105/150

Weight Its weight is about 0.4 kg

FM/DC-AC/21



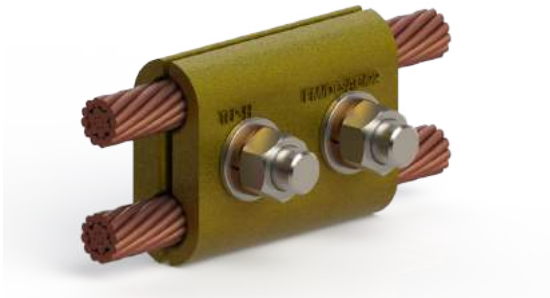
Parallel Clamp 160 to 193/129

Weight Its weight is about 0.6 kg

Standard Copper Items

Parallel Clamps

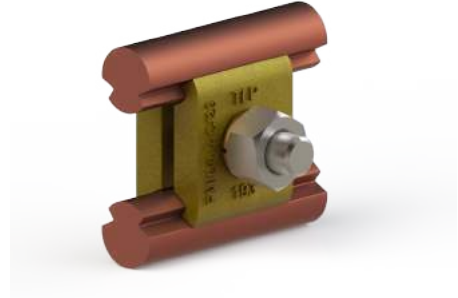
FM/DC-AC/22



Parallel Clamp for 129/105/150 to 129/105/150

Weight Its weight is about 0.6 kg

FM/DC-AC/23



Parallel Clamp for Double Contact Wire (193)

Weight Its weight is about 0.1 kg

Usage This clamp is used in 193 sq mm double contact wire

FM/DC-AC/24



Parallel Clamp for 323 Catenary to 160 Jumper

Weight Its weight is about 1.4 kg

FM/DC-AC/25



Parallel Clamp for 323 to 323 Catenaries

Weight This clamp is used in two 323 mm² catenary wire

Standard Copper Items

Parallel Clamps

FM/DC-AC/33



Parallel Clamp for 323 Catenary to 242 Catenary

Weight Its weight is about 1.4 kg

Splicing Clamps

CW/TD/DC-AC/P/004 aka FM/DC-AC/5



Splicing Clamp (Crocodile Type)

Weight Its weight is about 1.6 kg

Suspension Clamps

CW/TD/DC-AC/P/003



Suspension Clamp for 323/242 Catenary Wire (New Suspension Clamp)

Weight Its weight is about 1.1 kg

Standard Copper Items

Suspension Clamps

FM/DC-AC/18

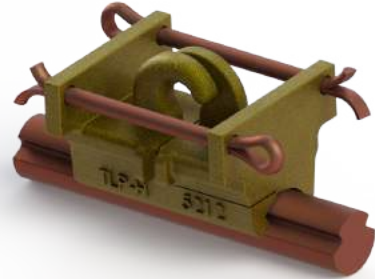


Suspension Clamp for 129 mm² Catenary Wire

Weight Its weight is about 1.0 kg

Dropper Clips

5212



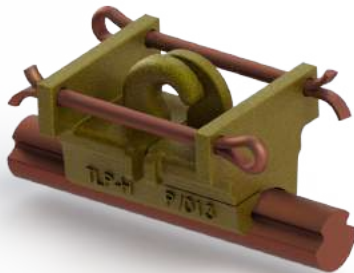
Dropper Clip for 193 mm² Contact Wire (Antifalling)

Weight Weight – Its weight is about 0.1 kg

Usage It is a dropper clip for 193 sq. mm. contact wire in DC-AC current

Dropper Clips

CW/TD/DC-AC/P/013 aka FM/DC-AC/9



Dropper Clip for 193 mm² Contact Wire (Antifalling)

Weight Its weight is about 0.1 kg

Usage It is a dropper clip for 193 sq. mm. contact wire in DC-AC current

CW/TD/DC-AC/P/014 aka FM/DC-AC/11



Dropper Clip for 242 mm² Catenary Wire

Weight Its weight is about 0.1 kg

Standard Copper Items

Dropper Clips

FM/DC-AC/10



Dropper Clip for 129 mm² Catenary Wire

Weight Its weight is about 0.1 kg

FM/DC-AC/34



Dropper Clip for 323 mm² Catenary Wire & 5 mm Solid Wire

Weight Its weight is about 0.1 kg

Swivel Clips

CW/TD/DC-AC/P/008A aka FM/DC-AC/19



Contact Wire Swivel Clip for 193 mm²

Weight Its weight is about 0.2 kg

Copper Sleeve

FM-DC-AC-29



Copper Sleeve

Weight Weight – Its weight is about 0.009 kg